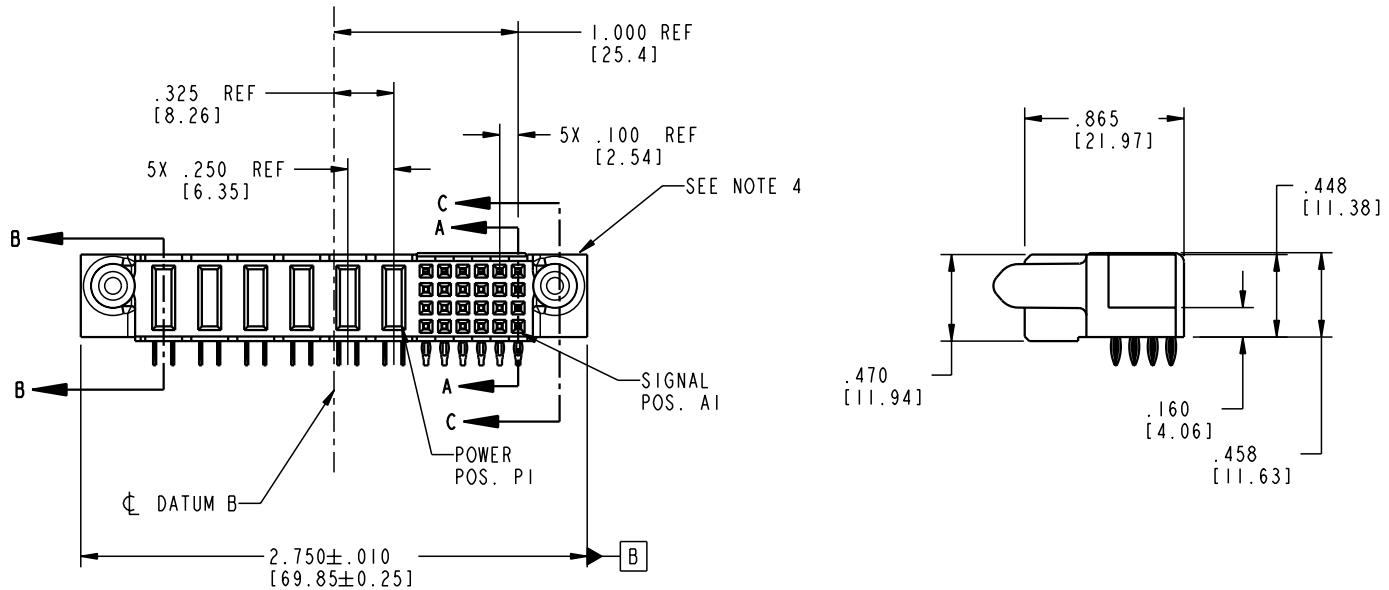
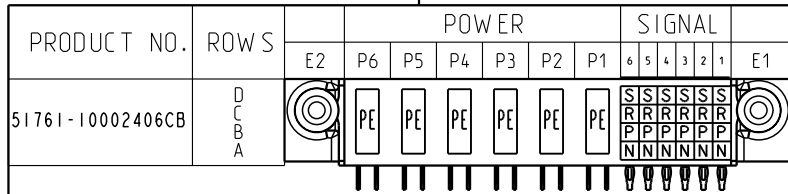


Tous droits strictement reserves. Reproduction ou communication a des tiers interdite sous quelque forme que ce soit sans autorisation ecrite du proprietaire. Propriete de c FCI. Droits de reproduction FCI.

All rights strictly reserved. Reproduction or issue to third parties in any form whatever is not permitted without written authority from the proprietor. Property of FCI. Copyright FCI.



CODE	DIM "M" MATING LENGTH	CONTACT TYPE
PE	.042 [1.07]	POWER
S	N/A [N/A]	SIGNAL
R	N/A [N/A]	SIGNAL
P	N/A [N/A]	SIGNAL
N	N/A [N/A]	SIGNAL

mat'l code SEE NOTE 2				tolerances unless otherwise specified		CUSTOMER		 www.fciconnect.com	
lfr	ecn no.	dr	date	linear	XX±.01/0.XY±0.3	COPY		title	
A	V03-0765	MEM	7/10/03	angles	.XXX±.005/0.XY±0.13	projection		24S + 6P	
					.XXX±.0020/0.XXX±0.051			R/A PRESS FIT RECEPTACLE	
				dr	M. MOSTOLLER 7/10/03	INCH/MM		product family	
				enr	M. MOSTOLLER 7/10/03	scale		PwrBlade	
				chr	H. BREWBAKER 7/10/03	1:1		code	
				appd	M. MOSTOLLER 7/10/03			213	
sheet index	revision	A	A	A	A			sheet	
	sheet	1	2	3	4			1 of 4	

cage code 22526

Tous droits strictement réservés. Reproduction ou communication a des tiers interdite sous quelque forme que ce soit sans autorisation écrite du propriétaire. Propriété de c FCI. Droits de reproduction FCI.

All rights strictly reserved. Reproduction or issue to third parties in any form whatever is not permitted without written authority from the proprietor. Property of FCI. Copyright FCI.

PRODUCT NUMBER  
51761-10002406CB

.010 REF  
[0.25]

.495 REF  
[12.57]

.007 REF TYP  
[0.18]

.100 REF TYP  
[2.54]

.154±.010 TYP  
[3.91±0.25]

DIM "M" ±0.010  
[±0.25]

.154±.010 TYP  
[3.91±0.25]

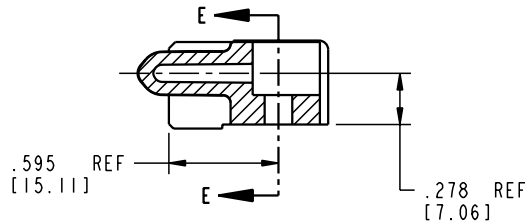
.054 REF TYP  
[1.37]

.495 REF  
[12.57]

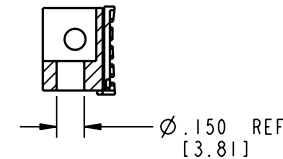
.100 REF TYP  
[2.54]

BROKEN-OUT SECTION A-A  
SCALE 2:1

BROKEN-OUT SECTION B-B  
SCALE 2:1



SECTION C-C



PARTIAL SECTION E-E

mat'l code				SEE NOTE 2		tolerances unless otherwise specified		CUSTOMER		 www.fciconnect.com	
lfr	ecn no.	dr	date	linear	XX±.01/0.X±0.3		COPY		 projection	title	
A					.XXX±.005/0.XX±0.13		INCH/MM			24S + 6P	
				angles	.XXX±.0020/0.XXX±0.051		 scale		R/A PRESS FIT RECEPTACLE		
				dr	M. MOSTOLLER	7/10/03	 1:1		product family		code
				enr	M. MOSTOLLER	7/10/03			PwrBlade		213
				chr	H. BREWBAKER	7/10/03			size		sheet
				appd	M. MOSTOLLER	7/10/03			 51761-10002406CB		2 of 4
sheet index		revision sheet									

cage code 22526

Pro/E

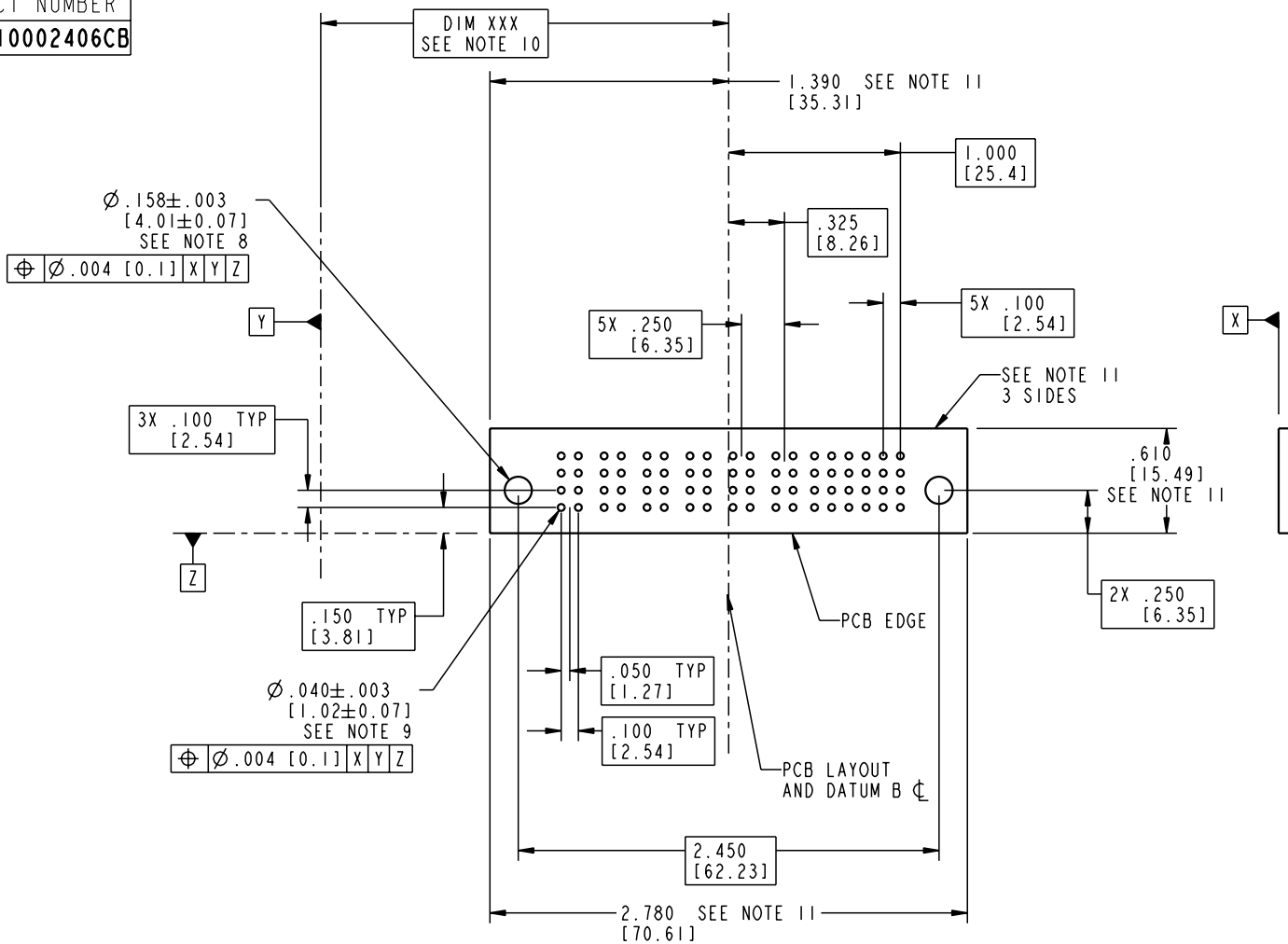
22526

Tous droits strictement réservés. Reproduction ou communication à des tiers interdite sous quelque forme que ce soit sans autorisation écrite du propriétaire. Propriété de c FCI. Droits de reproduction FCI.

All rights strictly reserved. Reproduction or issue to third parties in any form whatever is not permitted without written authority from the proprietor. Property of FCI. Copyright FCI.



PRODUCT NUMBER  
51761-10002406CB



mat'l code SEE NOTE 2				tolerances unless otherwise specified		CUSTOMER		<b>FCI</b> www.fciconnect.com	
lfr	ecn no.	dr	date	linear	XX ± .01 / 0.X ± 0.3	COPY		title 24S + 6P	
A				projection	XXX ± .005 / 0.XX ± 0.13	projection		R/A PRESS FIT RECEPTACLE	
				angles	XXX ± .0020 / 0.XXX ± 0.051	INCH/MM		product family PwrBlade code 213	
				dr	M. MOSTOLLER 7/10/03	scale 1:1		size dwg no 51761-10002406CB sheet 3 of 4	
				enr	M. MOSTOLLER 7/10/03				
				chr	H. BREWBAKER 7/10/03				
				appd	M. MOSTOLLER 7/10/03				
sheet index	revision sheet								

Pro/E

cage code 22526

Tous droits strictement reserves. Reproduction ou communication a des tiers interdite sous quelque forme que ce soit sans autorisation écrite du propriétaire. Propriete de c FCI. Droits de reproduction FCI.

All rights strictly reserved. Reproduction or issue to third parties in any form whatever is not permitted without written authority from the proprietor. Property of FCI. Copyright FCI.

1 | 2

3 |

4

PRODUCT NUMBER  
**51761-10002406CB**

NOTES:

1. DIMENSIONS AND TOLERANCES ARE IN ACCORDANCE WITH ASME Y14.5M, 1994 UNLESS OTHERWISE SPECIFIED.

CONNECTOR NOTES:

- 2. HOUSING MATERIAL: UL 94 V-0 GLASS FILLED  
HIGH-TEMP THERMOPLASTIC  
POWER CONTACT MATERIAL: COPPER ALLOY  
SIGNAL PIN MATERIAL: COPPER ALLOY
- 3. PLATING:  
SIGNAL PINS: 30u"/0.76um Au OVER 50u"/1.27um Ni  
POWER CONTACTS: 50u"/1.27um Ni UNDER ALL  
WITH 30u"/0.76um Au ON CONTACT AREA  
AND SnPb ON PCB INTERFACE
- 4. MANUFACTURER'S NAME, P/N, AND DATE CODE TO APPEAR ON THIS SURFACE.
- 5. PRODUCT SPECIFICATION GS-12-149.  
APPLICATION SPECIFICATION BUS-20-067.
- 6. PACKAGED IN TRAYS.

PCB NOTES:

- 7. ALL HOLE DIAMETERS ARE FINISHED HOLE SIZE.
- 8. MOUNTING HOLES, WHERE APPLICABLE, ARE UNPLATED.
- 9.  $\varnothing .0453 \pm .0010$  [1.151  $\pm$  0.025] DRILLED HOLES PLATED WITH .0003 [0.008] MIN SnPb OVER .001 [0.03] TO .003 [0.08] Cu PLATING TO ACHIEVE  $\varnothing .040 \pm .003$  [1.02  $\pm$  .07] HOLE.
- 10. "DIM XXX" TO BE DETERMINED BY THE CUSTOMER.
- 11. CONNECTOR KEEP-OUT ZONE.
- 12. USE FCI CAM TOOL 430140-009 TO APPLY CONNECTOR TO PCB.

A

A



B

B

mat'l code				SEE NOTE 2		tolerances unless otherwise specified		CUSTOMER		 www.fciconnect.com		
ltr	ecn no.	dr	date	linear	.XX±.01/0.X±0.3		projection	COPY		title		
A					.XXX±.005/0.XX±0.13					24S + 6P		
				angles	.XXX±.0020/0.XXX±0.051		 INCH/MM	R/A PRESS FIT RECEPTACLE		product family		
				dr	0° ± 2°			PwrBlade		code		
				enr	M. MOSTOLLER	7/10/03	scale	size		sheet		
				chr	M. MOSTOLLER	7/10/03		1:1		213		
				appd	H. BREWBAKER	7/10/03	A		51761-10002406CB		4 of 4	
sheet index		revision sheet										

1 | 2

Pro/E

3 |

cage code  
**22526**

4